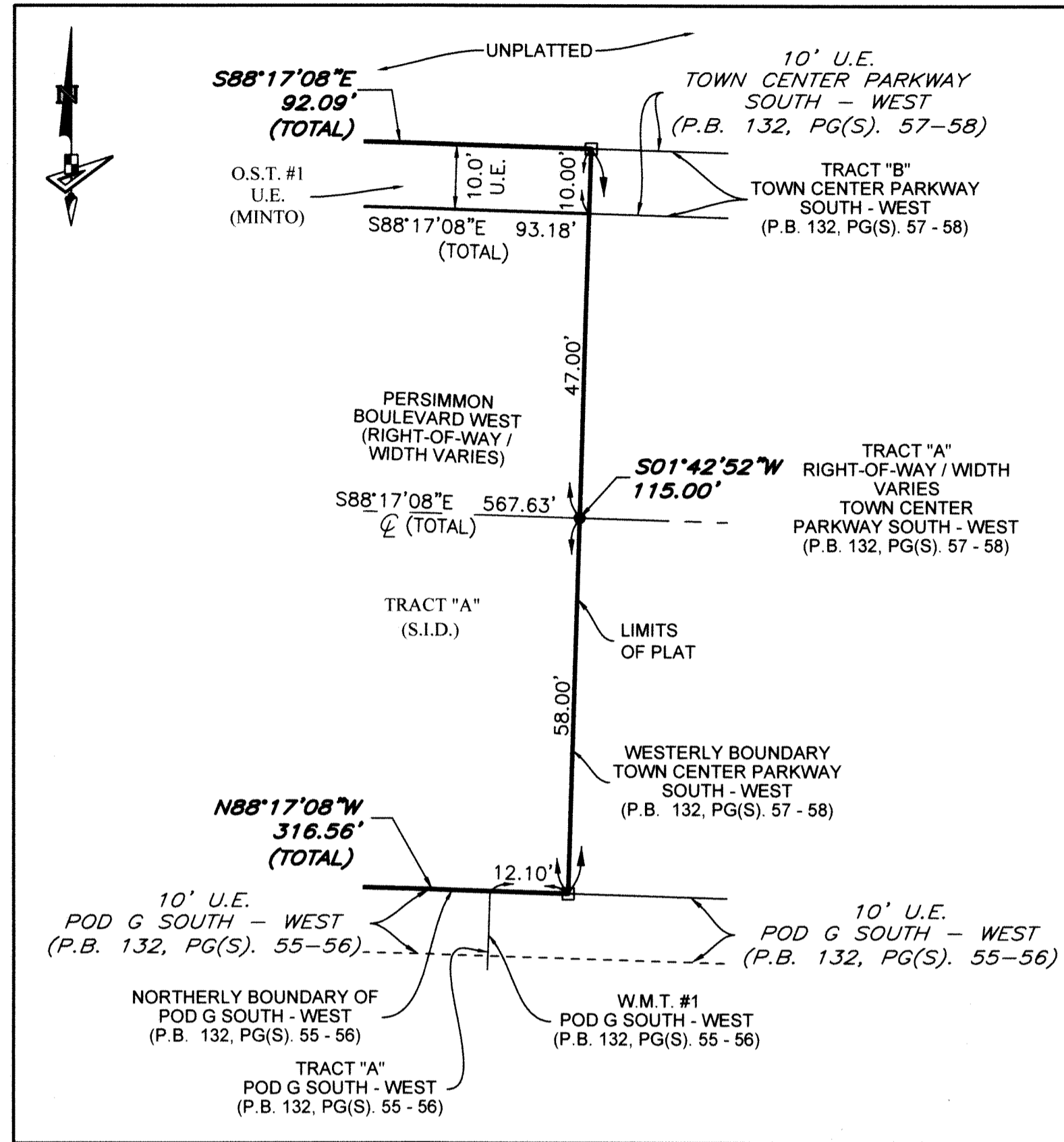


PERSIMMON BOULEVARD WEST - PLAT 2

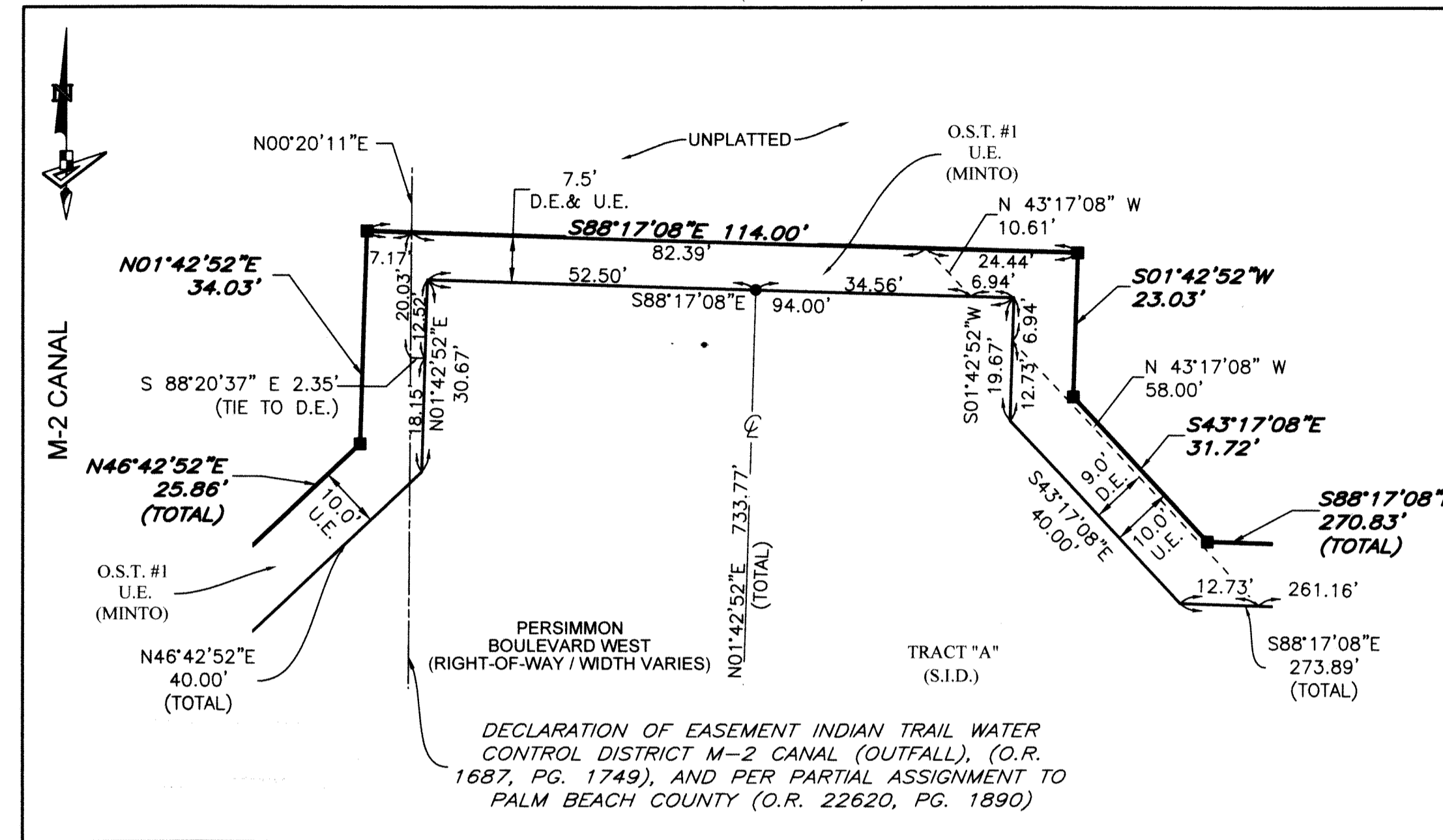
BEING A PORTION OF SECTION 1, TOWNSHIP 43 SOUTH, RANGE 40 EAST,
CITY OF WESTLAKE, PALM BEACH COUNTY, FLORIDA, AND BEING A REPLAT OF ALL OF TRACT "C",
AS SHOWN ON THE PLAT OF TOWN CENTER PARKWAY SOUTH - WEST, PLAT BOOK 132, PAGES 57
AND 58, OF THE PUBLIC RECORDS OF PALM BEACH COUNTY, FLORIDA

166

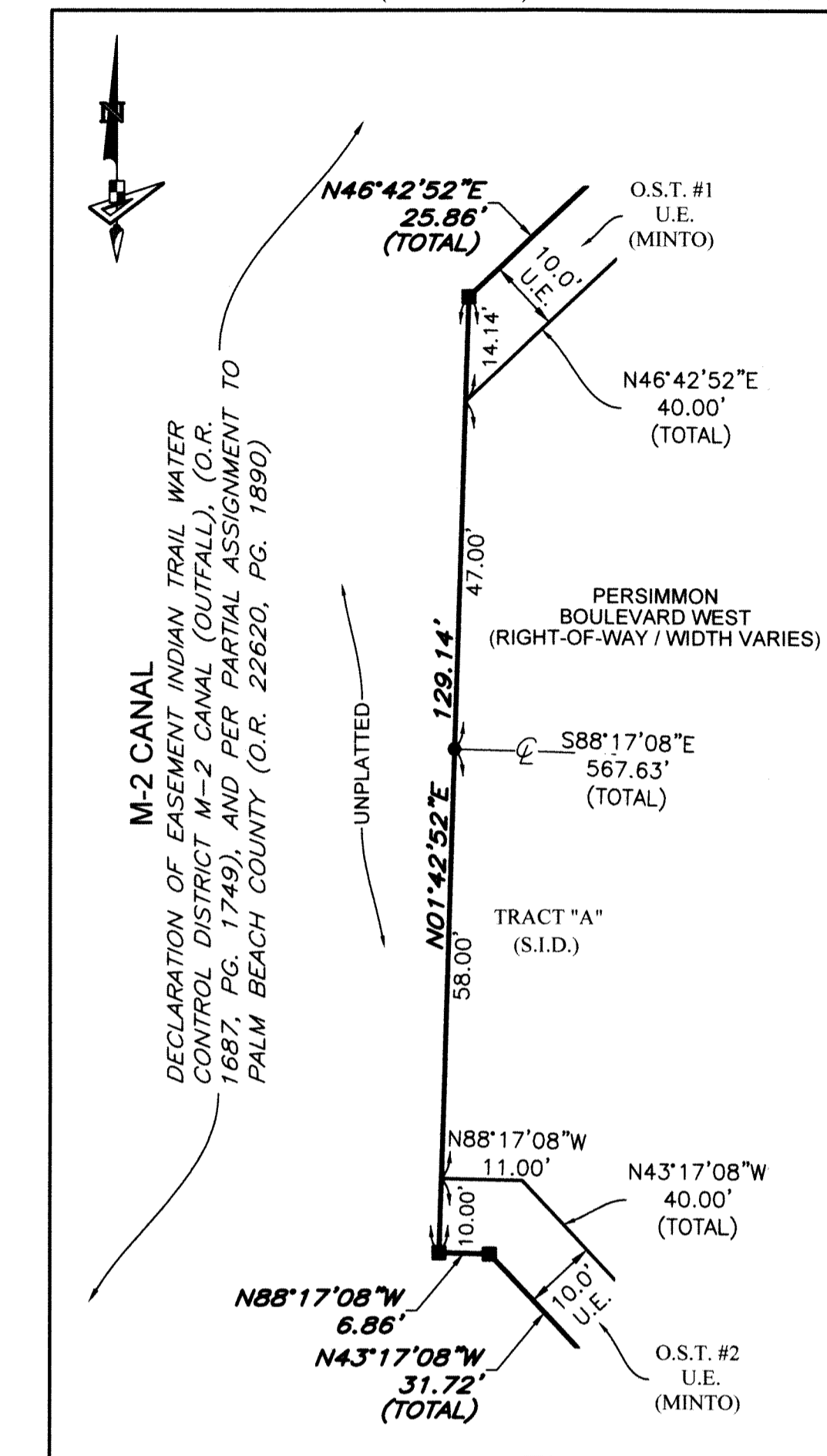
DETAIL "A" (SCALE: 1"=20')



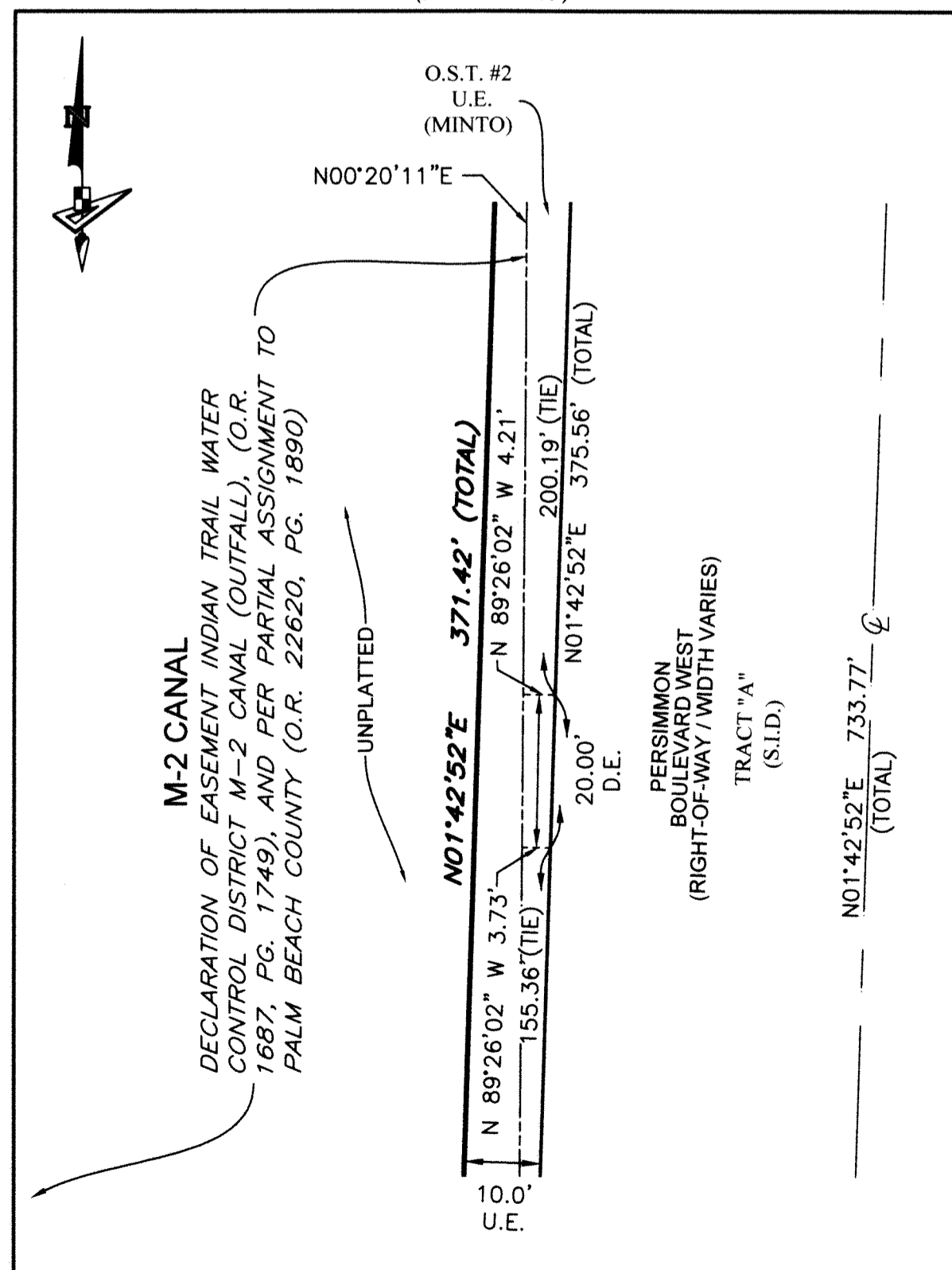
DETAIL "B" (SCALE: 1"=20')



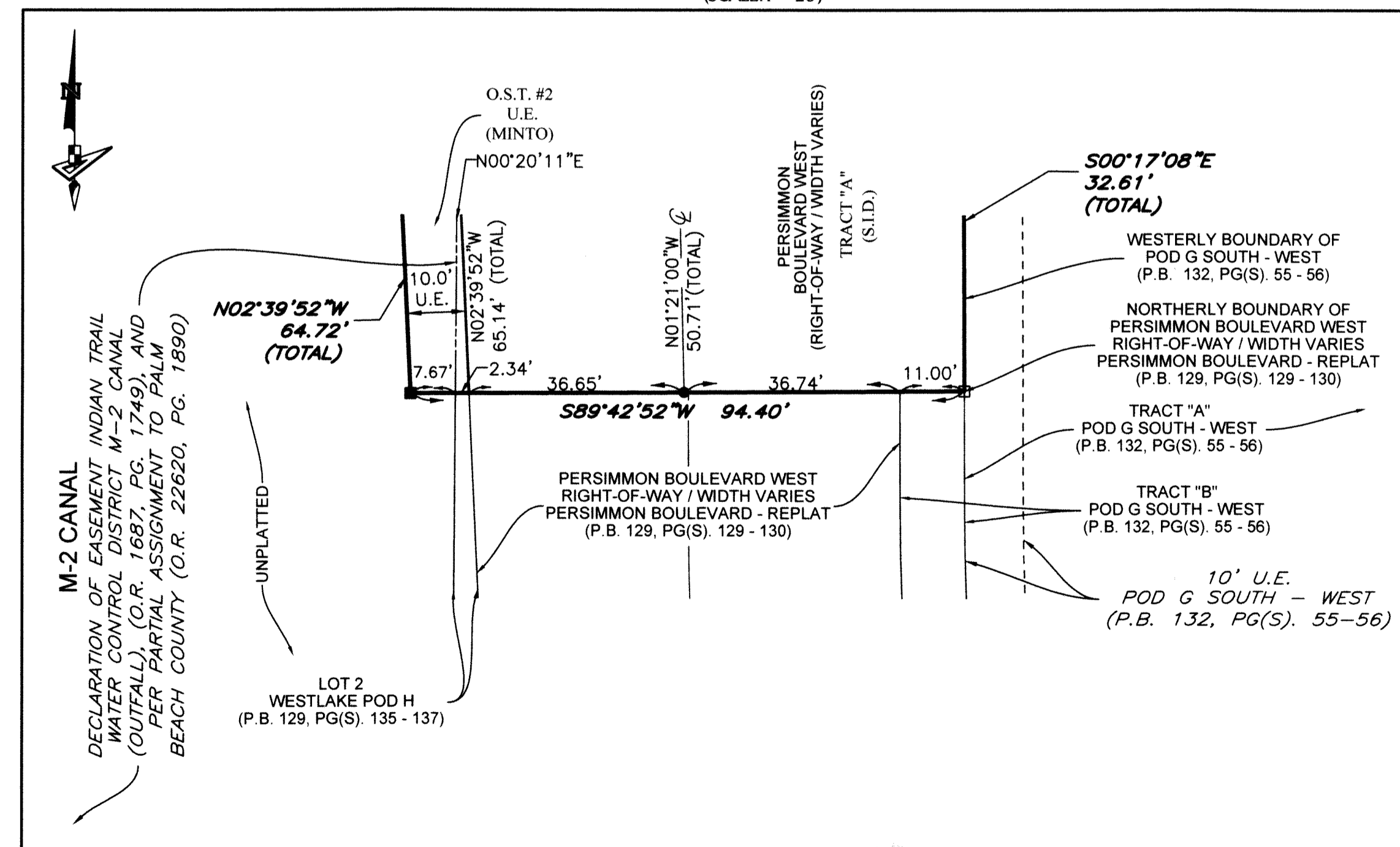
DETAIL "C" (SCALE: 1"=20')



DETAIL "D" (SCALE: 1"=20')



DETAIL "E" (SCALE: 1"=20')



LEGEND

- P.O.B. ----- POINT OF BEGINNING
- P.O.C. ----- POINT OF COMMENCEMENT
- P.B. ----- PLAT BOOK
- PG./PG(s) ----- PAGE(S)
- O.R.B. ----- ROAD PLAT BOOK
- NAD ----- NORTH AMERICAN DATUM
- W.M.T. ----- WATER MANAGEMENT TRACT
- O.S.T. ----- OPEN SPACE TRACT
- P.B.C. ----- PALM BEACH COUNTY
- D.E. ----- DRAINAGE EASEMENT
- U.E. ----- UTILITY EASEMENT
- 5-43-41 ----- SECTION-TOWNSHIP-RANGE
- R ----- RADIUS
- L ----- ARC LENGTH
- D ----- DELTA ANGLE
- CL ----- CENTER LINE OF ROAD
- R.C. ----- REVERSE CURVATURE
- N.T. ----- NON-TANGENT
- N.T.C. ----- NON-TANGENT CURVATURE
- P.C. ----- POINT OF CURVATURE
- P.T. ----- POINT OF TANGENCY
- R/W ----- RIGHT-OF-WAY
- S.I.D. ----- SEMINOLE IMPROVEMENT DISTRICT
- PRM ----- PERMANENT REFERENCE MONUMENT
- ----- PERMANENT CONTROL POINT
- ----- FOUND 4"x4" CONCRETE MONUMENT WITH 2" ALUMINUM DISK STAMPED "PRM LB 7768"
- ----- SET 4"x4" CONCRETE MONUMENT WITH 2" ALUMINUM DISK STAMPED "PRM LB 7768"



4152 W. Blue Heron Blvd.
Suite 105
Riviera Beach, FL 33404

Phone: (561) 444-2720
www.geopointsurvey.com
Licensed Business Number LB 7768

Sheet No. 3 of 3 Sheets